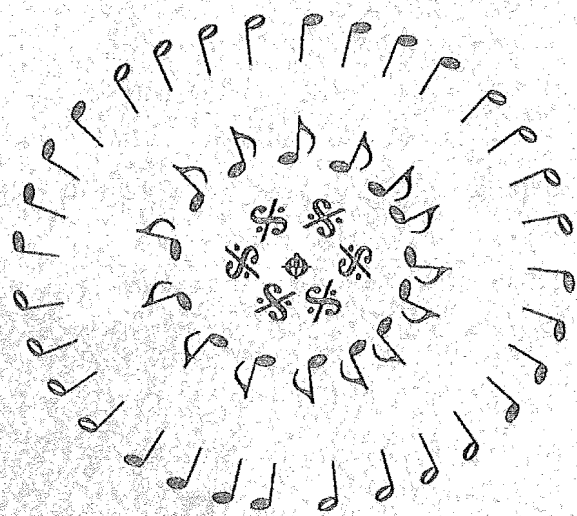


**Colloquium for Teachers
of
Elementary Music Methods**

May 12, 13, 14, 1991
Mountain Lake, Virginia



Co-sponsored by
Middle Tennessee State University
and
Indiana University School of Music

Colloquium for Teachers of Elementary Music Methods

May 12, 13,14, 1991
Mountain Lake, Virginia

Colloquium Chairs

Nancy Boone, Middle Tennessee State University

Mary Goetze, Indiana University School of Music



-- Acknowledgements --

James Walker, President
John McDaniel, Dean of Liberal Arts
Tom Naylor, Chairman, Music Department
Middle Tennessee State University

Charles H. Webb, Dean
Indiana University School of Music

Madeline Bridges
Colloquium Textbook Coordinator

Mark Apfelstadt
Colloquium Technology Consultant



*This colloquium is supported by a grant
from the Middle Tennessee State University*

Program

All activities are in the Ballroom unless noted.

Sunday Evening

4:00 Registration Lobby
Meet in the lobby if you would like to have guided tour of Mountain Lake.
Sign up for Round Table Discussions

6:00-7:00 Dinner Dining Room

7:30 Opening Session
Welcome: Nancy Boone, Middle Tennessee State University

Envisioning the Future--It's Us
Carol Scott-Kassner, Seattle Pacific University

9:00 Reception: Be our guest for wine and cheese.

Monday Morning

6:30 Nature Walk Meet Buckey and Joan Boone in the Lobby.

7:00-8:00 Breakfast Dining Room

8:15 Begin the Day with Song Mary Goetze, Indiana University

Throughout the day, Mark Apfelstadt will demonstrate applications of technology to methods teaching in the Oak Room, and a display of textbooks will be on display in the Board Room.

8:30-9:30 *Research in Music Teacher Education*
Lizabeth Wing, University of Cincinnati
College Conservatory of Music
Discussants: Linda Damer, Indiana State University
Ann Small, Stetson University

9:45-10:45 *If-Then: Implications of Research for the Teaching of Elementary General Music Methods Classes*
Eunice Boardman, University of Illinois

11:00-12:00 *Learning Characteristics of College-aged Students*
Panel Leader, **Eve Harwood**, University of Illinois
Panelists: Janet Barrett, University of Wisconsin-Whitewater
Walter Mayo, State University of New York-Fredonia
Janet Montgomery, University of Colorado-Boulder

12:00 Lunch Dining Room
Syllabus Exchange 1
Bring 10-12 copies of your syllabus and/or course materials to lunch.

Monday Afternoon

All activities are in the Ballroom unless noted.

- 1:15-2:15 *The Fine Art of Writing Lesson Plans*
Panel Leader: **Mary Pautz**, University of Wisconsin-Milwaukee
Panelists: Hilary Apfelstadt, University of North Carolina-Greensboro,
Cynthia Curtis, Belmont College
- 2:30-3:30 **Simultaneous Special Interest Sessions**
- Preparing Teachers for Mainstreaming* Ballroom
Betty Atterbury, University of Southern Maine
Discussants: Lee M. Beall, Winston-Salem State University
Milton Butler, Ohio University at Athens
- The Music Education of Early Childhood Majors:
All God's Critters Got a Place in the Choir* Cascade Room
Donna Fox, Eastman School of Music
Discussants: Carol Rogel-Kassner, Seattle Pacific University
Danette Littleton, University of Tennessee -Chattanooga
- Technology and the Methods Class* Oak Room
Mark Apfelstadt, University of North Carolina-Greensboro
- 4:00-5:00 *Meeting the Field Experience Challenge*
Panel Leader: **Michon Rozmajzl**, Boise State University
Panelists: Peggy Bennett, University of Texas at Arlington
Rene Boyer-White, University of Cincinnati
College Conservatory of Music
Lisa DeLorenzo, Montclair State College

Monday Evening

- 6:30 Dinner Dining Room
Round Table Discussions 1
- 8:00 *Generational Perspectives: What Can We Learn from the Past?*
Eunice Boardman, University of Illinois
Discussants: Joy Lawrence, Kent State University
Dorothy McDonald, University of Iowa
- 9:00 *Music from the Heart of Bluegrass Country* Recreation Barn
Bluegrass Band, Tom Casteel, Leader
Bristol, Virginia
Refreshments and Cash Bar Available

Tuesday

All activities are in the Ballroom unless noted.

- 6:30 Nature Walk Meet Buckey and Joan Boone in the Lobby.
- 7:00-8:00 Breakfast Dining Room
- 8:15 Begin the Day with Song: Nancy Boone, Middle Tennessee State University
-

Throughout the day, Mark Apfelstadt will demonstrate applications of technology to methods teaching in the Oak Room, and a display of textbooks will be on display in the Board Room.

- 9:00-10:00 *Innovative Ideas for Teaching Methods to Non-Majors*
Panel leader: **Carolee Curtright**, University of Nebraska-Lincoln
Panelists: Ellen Amsterdam, Sonoma State University
Shirley Barasch, Point Park College
Peggy Bennett, University of Texas at Arlington
Gwen Hotchkiss, Loyola University

-----Checkout of Rooms by 11:00 AM-----

10:45-11:45 Simultaneous Special Interest Sessions

Multicultural Concerns in the Methods Class Cascade Room
Panel Leader: **Rene Boyer-White**, University of Cincinnati College
Conservatory of Music
Panelists: Martha Giles, George Mason University
Ellen McCullough-Brabson, University of New Mexico
Pierre Perron, Dalhousie University

What our Graduates Wish We Had Told Them Ballroom
Panel Leader: **Madeline Bridges**, Music Consultant,
Tennessee Department of Education
Panelist: Michael Jochen, Supervisor of Music,
Baltimore County Vocal and General Public Schools

- 12:00 Lunch Dining Room
- Round Table Discussions 2
Syllabus Exchange 2
*If you did not sign up for a Round Table discussion, bring 10-12 copies
of your syllabus and/or course materials to lunch.*

- 1:00-2:00 *Evaluation of Student Teaching in the Methods Class*
Nancy Barry and Bob Johnson, Auburn University
Discussant: Hilary Apfelstadt, University of North Carolina-Greensboro

- 2:15-3:15 Closing Session: *Future Directions*
Eunice Boardman, University of Illinois
Carol Scott-Kassner, Seattle Pacific University

Round Table Discussion Topics

Look for sign up sheet in the Ballroom.

Dinner on Monday Evening

"Electronic Classrooms: A New Venue of Collaborative Learning"
Robert P. Althaus, Professor of Sociology, Indiana University

"Instrumental and Choral Students in the Elementary Methods Class"
Patricia A. Bourne, Central Washington University

"Preparing Students for Inner City/Urban Teaching"
Amy Chivington, School of Music, Otterbein College

"The Uses of Video in Methods Classes"
Catherine Nadon Gabrion, University of Michigan

"Cooperating Teachers--Modifying or Upgrading"
Catherine Jarjisian, Oberlin College Conservatory of Music

"Realistic Goals for Non-Majors"
Marlin McCutchan, Southeast Missouri State University

"What Are Appropriate Skill Requirements for Non-Majors?"
Mollie Autry Molnar, Northwest Missouri State University

"The Holmes Approach: A Five-Year Program in Music Education"
Diane Persellin, Trinity University

Lunch on Tuesday

"A More Recent Look at Musical Characteristics of Children"
Joyce Wunderlich, Mansfield University

"Teaching Classroom Management Skills in the Methods Class"
Lois Schleuter, Indiana University

"Methods and Fundamentals: Together or Separate"
Jean Sinor, Indiana University

"Reflection in Teaching"
Janet Robbins Zimmerman, West Virginia University

"Fostering Future Generations of Creative Individuals"
Jana Fallin, Kansas State University

Textbooks of Interest

Textbook publishers have provided copies of books related to methods teaching for your perusal during the colloquium. These are on display in the Board Room. We express our thanks to following publishers:

Alfred Publishing

Charles Merrill

Contemporary Music Publishing

Eddie Bower Publishers

Harcourt Brace

Holt, Rinehart and Winston

Longman Inc.

Prentice-Hall

Schirmer Books

Wadsworth Publishing Company

William C. Brown

Madeline Bridges, Music Consultant for the state of Tennessee, arranged for this exhibit.



A personal thanks to those who assisted us

Susan Ciampa

Andrew Dunn IV

Laura Diddle

Dorothy McCormick

Shirley Brown

Buckey and Joan Boone

ABOUT THE KEYNOTE SPEAKERS

Eunice Boardman

Dr. Boardman, Professor of Music and Education and Director of Graduate Studies in Music Education, joined the faculty of the School of Music, University of Illinois in 1989. Prior to her appointment at the U. of I. she was Professor of Music and Education at the University of Wisconsin-Madison for 14 years; serving as Director of the School of Music for nine years. She began her career as a public school music teacher and taught for ten years in the public schools of Iowa. Subsequently she taught at Northern Illinois University, Wichita State University. Dr. Boardman's publications and research are in the field of elementary music education and in teacher education. Her publications include six editions of elementary music textbook series, beginning with Exploring Music (1966, 1972, 1965), followed by The Music Book (1980, 1984) and Holt Music (1988). She is co-author (with Professor Emeritus Bjornar Bergethon) of Musical Growth in the Elementary Schools, now in its fifth edition. Her most recent publications include editing Dimensions of Musical Learning (MENC, 1989) and providing the chapter on research in music teacher education for the Handbook on Research in Teacher Education (ATE, 1989). Dr. Boardman is best known for her development of the generative theory of music learning and for her work in teacher education. She served as chair of the Society for Music Teacher Education (MENC) from 1984-1986.

Carol Scott-Kassner

Dr. Carol Scott-Kassner is Professor of Music Education and Director of the Music Division of the School of Fine and Performing Arts at Seattle Pacific University where she has worked since 1976. Prior to that time she taught music in the public schools and music education courses at the University of Washington. She completed her Ph.D. in Psychomusicology at the University of Washington with an emphasis on the development of music cognition in preschool children. She also completed all but the final paper for a DMA in music education. Her publications include the Elementary Series of the TAP Rhythm Training Series; Grades K, 1, and 2 of the World of Music, by Silver Burdett and Ginn, co-authored with Mary Palmer and Mary Louise Reilly; the chapter on early childhood for the Handbook on Research in Music Education; and numerous articles on musical growth in the very young child. She is a co-founder and past chair of the Early Childhood Commission of the International Society of Music Education and past chair of the Music Education Research Council, the governing body of the Society for Research in Music Education. She is a recipient of the Burlington Northern Award for teaching excellence and the Kennedy Center Award for Leadership in Arts Education.

ABOUT THE PRESENTERS

Ellen Amsterdam

Ellen Amsterdam holds a Ph.D. in Music from the University of California, Berkeley and is a professor at Sonoma State University where she has taught music and mathematics and coordinated the music education program. She recently presented papers on teaching and teacher training at the national conference of Women in Mathematics and the Sciences, and at ISME Leningrad and Helsinki.

Hilary Apfelstadt

Hilary Apfelstadt is on the faculty of the University of North Carolina at Greensboro where she is an Associate Professor, responsible for teaching undergraduate and graduate level music education courses, supervising student teachers, and serving as academic advisor for the Choral-General music education majors. She also conducts the University Women's Choir, which has performed on regional conferences of MENC (1985, 1998) and ACDA (1988), as well as at the national ACDA convention in 1989. President of the NC chapter of ACDA, Hilary Apfelstadt is an active clinician and guest conductor throughout the country. She has published many articles on various aspects of music education and choral music, and is author of a monograph of works for women's choruses by Canadian composers. Recently she was appointed co-editor of a new publication, The Society for Music Teacher Education Journal, sponsored by MENC.

Marc Apfelstadt

Dr. Marc Apfelstadt is an Assistant Professor in the School of Music at the University of North Carolina at Greensboro. He has been involved with musical use of computers for almost ten years, and is the author of music software for ear training and published synthesizer voices, as well as articles and books about computers and music. His interest in computer and synthesizer applications extends from composition and live MIDI performance to exploring educational potential for technology at all age levels.

Betty W. Atterbury

Betty W. Atterbury is an Associate Professor of Music and Coordinator of Music Education at the University of Southern Maine. She is the author of Mainstreaming Exceptional Learners in Music, Prentice-Hall, 1990, as well as numerous articles in Music Educators Journal, Bulletin of the Council for Research for Music Education, and other national and international journals. She is the Chair of the Editorial Committee, Music Educators Journal, for the years 1990-1994 and is President-Elect of the Maine Music Educators Association. Her research interests center on topics encountered in elementary general music teaching including the development of the child singing voice and learning/teaching problems resulting from mainstreaming.

Shirley Barasch

Shirley Barasch, Professor and Director of Music at Point Park College, Pittsburgh, Pennsylvania, teaches musical theatre, private voice, and music education for classroom teachers. Previously, as Professor of Education for eleven years, she coordinated early childhood and elementary student teaching experiences. Her original music materials and hands-on demonstrations encourage teachers to regard music as a developmental partner in classrooms.

Janet Revell Barrett

Janet Revell Barrett is an assistant professor in the departments of music and curriculum and instruction at the University of Wisconsin-Whitewater. Her interests include teacher education, curriculum studies and the development of musical intelligence.

Nancy H. Barry

Nancy H. Barry is an Assistant Professor of Music Education in the Department of Curriculum and Teaching at Auburn University. She earned the Ph.D. in Music Education, the M.M.E, and Certificates in Computers in Music at the Florida State University, and the B.M. in Instrumental Music Education at Middle Tennessee State University. Her research interests which include topics related to private instrumental and ensemble instruction reflect her work as a general music teacher in grades K-8 and K-12 and as an independent studio teacher of woodwinds, piano, and guitar. Currently she is studying practice techniques and individual differences. She is the Associate Editor of Ala Breve, the official publication of the Alabama Music Educators Association.

Lee M. Beall

Dr. Beall is Professor of Music and University Organist at Winston-Salem State University and is Special Music Consultant to the Winston-Salem/Forsyth County School System. He has won numerous state and local awards for his work with the handicapped. He regularly makes presentations at national and international professional meetings on methods of teaching music to the mentally handicapped and is often called upon to be a Very Special Arts workshop leader and presenter. He developed and is currently teaching courses entitled "Music in Special Education" and "Sign Language Through Music." Lee is also a board-certified music therapist (RMT/CMT). He has authored several articles on the teaching of music to physically and mentally handicapped children. Dr. Beall is an Orff-Schulwerk specialist, concentrating on using music to teach life skills to mentally handicapped young adults. He has a particular interest in music for the hearing impaired and music for the physically handicapped.

Peggy Bennett

Peggy Bennett is in her tenth year as Head of Music Education at The University of Texas at Arlington and holds degrees from Ball State University (BS, MA) and University of North Texas (PhD). Known for her thought-provoking and classroom-effective workshops and articles for teachers, Peggy has been an invited clinician at state (TX, MT, LA, IN, PA), national (MENC), international (ISME), and regional music education conferences. In addition to being in demand as a presenter for numerous school district in-service workshops, Peggy has, for the past 14 years, offered teacher-training courses through a variety of universities across the country. For the past several years, Peggy has worked with children on a volunteer basis to ensure the relevance, applicability, and vitality of the methods and materials she uses with teachers and future teachers. This relevance and vitality have made her courses popular to music and education majors and have earned her recognition for the past three years at UT-Arlington for her "excellence in teaching." In April 1991, Peggy was the university recipient of the Chancellor's Council Award for Excellence in Teaching. A published author of over 25 pedagogical and research articles, Peggy's work can be found in the Music Educators Journal, General Music Today, the Journal of Research in Music Education, and the International Journal of Music Education.

Rene Boyer-White

Rene Boyer-White is an Associate Professor of Music Education and the Coordinator and Director of the Orff Schulwerk Certification Program at the University of Cincinnati's College Conservatory of Music. She possesses a Bachelor's and a Master's Degree from Southern Illinois University in Edwardsville, Illinois and a Doctorate Degree from Washington University in St. Louis, Missouri. Rene has completed three levels of Orff Teacher Training Certification and in 1988 received Kodaly Certification in Solfege, Choir Technique and Teacher Training from the Danube Bend Summer University in Estzergom, Hungary. Rene is presently serving as President of the Greater Cincinnati Orff Chapter. She is the Multicultural Chairperson for the Ohio Music Education Association and Recording Secretary for the National Black Music Caucus of the Music Educators National Conference. As a clinician and teacher, she is very active. In addition to the numerous inservice teacher workshops that she presents yearly across the United States, she has presented at numerous state and national conferences of MENC. In addition to her classes at the University of Cincinnati, she regularly teaches music on a part time basis at the Taft Elementary School in Cincinnati, Ohio. Rene has published numerous articles for a variety of journals. She has also been captured on video by both AOSA and MENC. She is a co-author of Music Fundamentals, Methods, and Materials for the Elementary Classroom Teacher, Longman Publishers (1990).

Madeline S. Bridges

Madeline S. Bridges is employed by the Arts Education Program of the Tennessee Department of Education as a Music Consultant. She is also Music Division Director of the Tennessee Arts Academy. She holds the B.M. degree in piano from Shorter College, Rome, GA and the M.Mus.Ed. degree from George Peabody School of Education of Vanderbilt University, Nashville, TN and has completed additional graduate work in Orff and Kodaly philosophy/methodology at Westminster Choir College and Belmont College. An active clinician and adjudicator, Madeline has published several articles and curriculum material; she recently co-authored How to Lead Children's Choirs published by Convention Press. Madeline has taught music and music education in classrooms from kindergarten through the graduate level and is currently adjunct instructor in music at Belmont College in Nashville. She also serves as co-director of the Nashville Children's Choir.

Milton L. Butler

Milton L. Butler, Assistant Professor of Music, holds a B.M.Ed. and an M.M.Ed. from Texas Southern University in Houston, Texas. He has had experience on the elementary and secondary levels in vocal/general music in the public schools of Houston, Texas and Tucson, Arizona. Other experiences include a teaching assistantship and an adjunct faculty position at the University of Arizona while completing work toward a doctoral degree in music education. Currently on faculty at Ohio University, Mr. Butler teaches music for classroom teachers and secondary music education courses.

Cynthia R. Curtis

Cynthia R. Curtis is on the faculty of the School of Music, Belmont College in Nashville, Tennessee.

Carolee R. Curtright

Carolee R. Curtright is Associate Professor of Music Education at the University of Nebraska-Lincoln. She received an A.A. from St. Joseph Junior College, a B.A. in Sacred Music from Culver Stockton College, and an M.Mus. from the University of Nebraska. Her publications include Foundations for Musical Learning in the Elementary School co-authored with Dorothy Kozak as well as compositions for the young voice and instrumental compositions. She is active as a clinician for elementary, junior high and high schools.

Linda K. Damer

Linda K. Damer is Professor of Music, Graduate Advisor, and Coordinator of the Music Education Division at Indiana State University, Terre Haute. Her degrees are from William Jewell College, Boston University, and the University of North Carolina at Greensboro. She is presently a member of the Editorial Board for the Music Educators Journal and is past president of the Indiana Music Educators Association.

Lisa DeLorenzo

Lisa DeLorenzo holds an Ed.D. from Teachers College, Columbia University, an M.M.E. from Indiana University, and a B.S. from West Chester University. A specialist in classroom music teaching, she has given workshops and lectures for music teachers throughout the United States. Her publications and research interests include creativity, critical thinking, and teacher training. Dr. DeLorenzo is on the music education faculty at Montclair State College.

Donna Brink Fox

Donna Brink Fox is an associate professor in the Music Education Department at the Eastman School of Music, where she teaches methods courses in general and choral music. Dr. Fox is the director of the early childhood music programs for the Community Education Division at Eastman, and also chairs the Early Childhood SRIG for the MENC.

Martha Mead Giles

Martha Mead Giles is a native of Oklahoma, and is part Cherokee. She holds three degrees from The University of Oklahoma (BFA, MME, and DME) where her dissertation was on Native American music and culture. For many years, she has maintained an abiding interest in ethnic music and has presented numerous workshops on Native American music and culture for classroom and music teachers. She has taught both in public school and secondary education with fifteen plus years of experience. Current, she is Assistant Professor of Music at George Mason University, in Fairfax, Virginia, where she teaches undergraduate and graduate classes in music education, supervises student teaching in general and choral music education, and conducts research. Her most recent research involves children at risk for conduct disorders, and music which can effectively alter their lives.

Eve E. Harwood

Eve Harwood is Assistant Professor in Music Education at the University of Illinois at Urbana-Champaign where she teaches elementary music methods, Orff and Kodaly. She is director of a laboratory school music program involving four hundred students from grades K through 8, and coordinator of early field experiences for undergraduate music majors. Before coming to Illinois as a doctoral student she taught for ten years in her native country of Canada at both the elementary school and the university levels. Her research includes various aspects of children's musical development including sight-singing, melodic perception, and memorized song repertoires of individual singers. Her most recent work investigates the role of music in children's folklore and the nature of informal music learning among school-age children.

Gwen Hotchkiss

Gwen Hotchkiss is Assistant Professor and Chairman of the Music Education Department at Loyola University in New Orleans. She holds the B.M.E. degree from Pittsburgh State University and the B.M. and M.M. degrees from the Conservatory of the University of Missouri at Kansas City as well as the Education Specialist in School Administration certificate from Kansas University. She has done additional graduate work at UCLA. Before going to Loyola University, she taught at California State, Dominguez Hills in Los Angeles and at Florida Atlantic University in Boca Raton, Florida. Her publications include Galaxy of Games for the Music Class (Prentiss Hall, 1975), Activities for Early Childhood (Prentiss Hall, 1980), Music Smart (Prentiss Hall, 1990), and music videos for Discovery Productions (SIRS) in Boca Raton.

Robert E. Johnson

Robert E. Johnson is an associate professor and coordinator of music education at Auburn University. His responsibilities include undergraduate and graduate courses in elementary and secondary music education. His teaching experience includes music for preschool children, general music, and elementary and secondary instrumental music. His publications include a collection of children's songs and a children's television music program.

Michael Jothan

Michael Jothan taught music grades K-12 and at the University of Northern Colorado and Ohio State University for eighteen years. Chairperson of the MENC Professional Teacher Certification Steering Committee, President-Elect of Choristers Guild, author of Music and You, choral compositions and various articles on vocal and general music, he is currently supervisor of Secondary Vocal and General Music for the Baltimore County Public Schools.

Joy E. Lawrence

Joy E. Lawrence is Professor of Music Education and Organ at Kent State University. She came to Kent State after extensive public school teaching (choral/general) in grades K-12. She has written numerous articles on both music education and church music for professional journals. Books include the second edition (with William M. Anderson) of Integrating Music into the Classroom (1991), The Organist's Shortcut to Service Music (1986) Supplement #1 (1987), A Musician's Guide to Church Music (with John A. Ferguson) (1981) and Teaching Music and Related Arts in the Classroom (with William M. Anderson) (1978). She leads many workshops and clinics in related arts and guest conducts choruses at all levels.

Danette Littleton

Danette Littleton, Professor of Music at the University of Tennessee at Chattanooga, began her college teaching career in Canada in 1970. Since then she has taught early childhood-elementary music methods over 100 times! She has received several research grants from the National Endowment for the Arts and Head Start for early childhood music teaching and learning. On May 18, 1991 she will receive (at last) the Ph.D. degree from the University of Texas at Austin for research on children's play and music.

Walter S. Mayo

Walter S. Mayo is on the faculty of the School of Music, State University of New York at Fredonia.

Ellen McCullough-Brabson

Ellen McCullough-Brabson teaches music education at the University of New Mexico as an associate professor of music. She has presented numerous multicultural music workshops, and has published articles on topics including Appalachian music, the dulcimer, and the use of ethnic instruments in the classroom. Ellen wrote the chapter on Appalachian music for the book Multicultural Perspectives in Music Education, an MENC publication.

Dorothy McDonald

Dorothy T. McDonald received a B.M.E. from the University of Nebraska, an M.M.E. from the University of North Carolina at Greensboro, and a Ph.D. from Ohio State University. She is presently Coordinator of Music Education at the University of Iowa. Previous teaching experience includes positions at Ohio State University, Greensboro College, and the University of North Carolina, Greensboro. She has also taught in public schools in Iowa, Illinois, and North Carolina. Publications include Music in Our Lives (NAEYC, 1979), Musical Growth and Development (Schirmer Books, 1989) and numerous journal articles. She is currently editor of Iowa Music Educator.

Janet Montgomery

Janet Montgomery received degrees from Wichita State University and the University of Wisconsin at Madison. Prior to coming to Boulder, she taught at Ithica College. In addition to being an accomplished singer and pianist, she specializes in general music methods and music therapy,

Mary Pautz

Mary P. Pautz is an assistant professor at University of Wisconsin-Milwaukee and co-director for the Center for General Music. She is a co-author of Holt Music, K-8 music series. Mary is known for her work in the development of approaches to music learning which stress individualized learning based on understanding children's unique learning styles. Her work with co-operative learning, early childhood, critical and creative thinking, integration of music with whole language and innovative approaches to listening keep her in demand as a clinician for workshops, conferences and inservices. She founded and chaired the Wisconsin Music Educators Conferences' acclaimed Music Listening Contest for five years. Mary's newest commitment is the establishment of a national subscription newsletter "Calling All Ears: Invitation to Listening." She received her Ph.D. from the University of Wisconsin-Madison

Pierre Perron

Pierre Perron graduated from McGill University in Montreal with a B.Mus. in Composition and from Holy Names College in California with a Masters Degree in Music Education (Kodaly Emphasis). He has taught music in both English and French at the elementary, high school and university levels. Publications include a text for university students, A Modular Course in Ear Training, and a series of lesson plan books to accompany ten series of radio music education programs broadcast by the CBC. He has conducted choirs since the age of 16 and founded the Stewart Hall Singers, a choral group invited to represent Canada at the International Kodaly Symposium held in Japan. He regularly brings a group of musicians to ISME conferences.

Michon Rozmajzl

Michon Rozmajzl is Professor of Music and coordinator of elementary music education at Boise State University in Boise, Idaho. She is a former classroom teacher and elementary music specialist who maintains her skills and credibility by regular music teaching at the elementary level. She is a frequent presenter at music conferences and has published extensively in music education journals. She is co-author of the music text Music Fundamentals, Methods, and Materials for the Elementary Classroom Teacher.

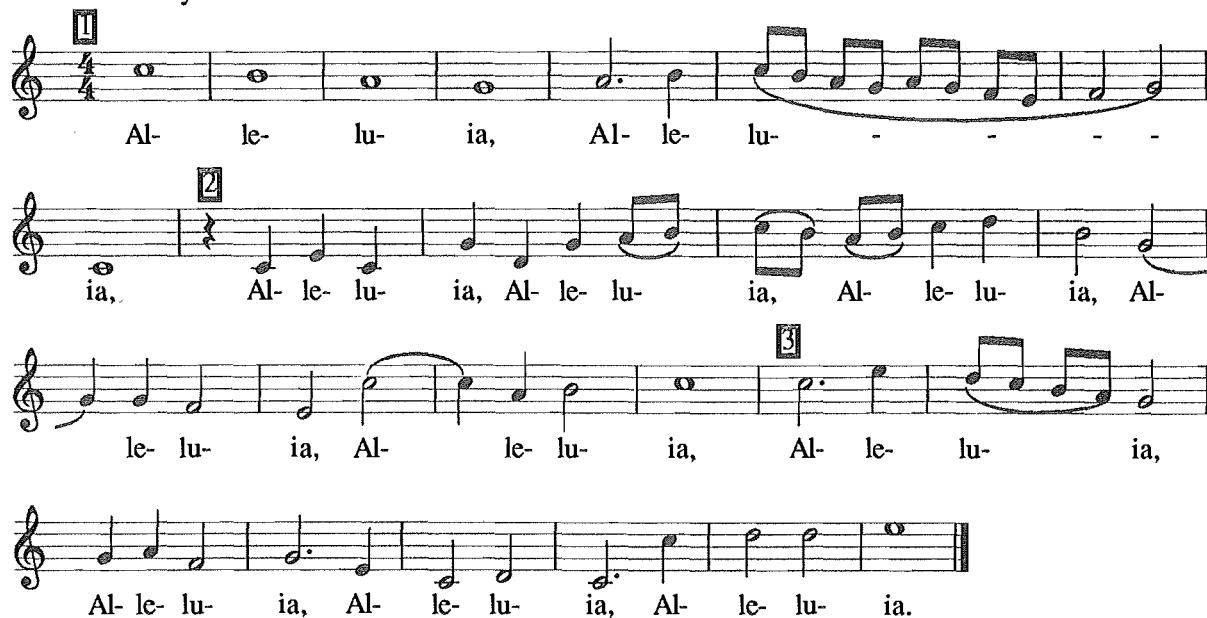
Ann Small

Ann Roberts Small is Coordinator of Music Education at Stetson University and the founder and director of the University Children's Choir. Her research interest include critical thinking skills in teacher education and vocal pitch-matching. She is the president-elect of Florida College Music Educators and is co-editor of the Journal of Music Teacher Education.

Lizabeth Bradford Wing

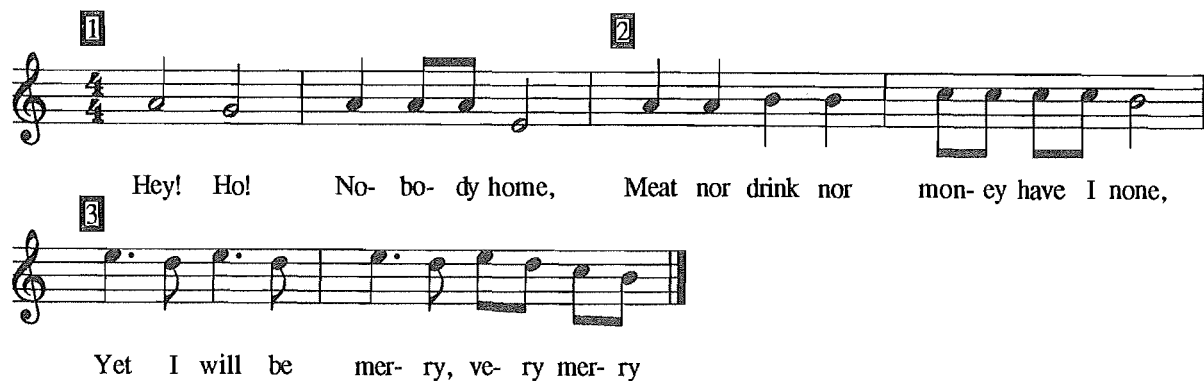
Lizabeth Bradford Wing is Head of the Division of Music Education and Associate Professor at the College-Conservatory of Music, University of Cincinnati. She received her professional preparation at Luther College, the University of Cincinnati, and the University of Illinois. Previous teaching positions have been with the public schools in Minnesota and Illinois, the University of Oregon, and Potsdam College. Her areas of special interest include teaching education, secondary general music, and evaluation.

Alleluia
William Boyce



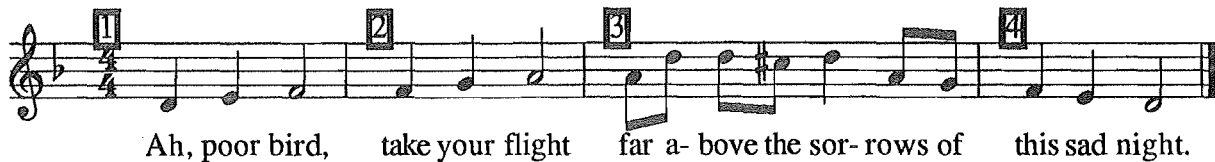
Al- le- lu- ia, Al- le- lu- - - -
ia, Al- le- lu- ia, Al- le- lu- ia, Al- le- lu- ia, Al-
le- lu- ia, Al- le- lu- ia, Al- le- lu- ia,
Al- le- lu- ia, Al- le- lu- ia, Al- le- lu- ia.

Hey! Ho! Nobody Home
Traditional



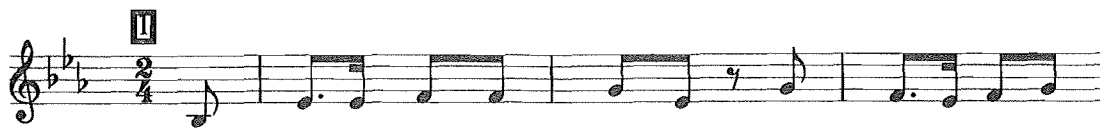
Hey! Ho! No- bo- dy home, Meat nor drink nor mon- ey have I none,
Yet I will be mer- ry, ve- ry mer- ry

Ah, Poor Bird
Traditional



Ah, poor bird, take your flight far a- bove the sor- rows of this sad night.

Kurikuku
Hebrew Round



Wake up the roost-er's crow- ing It's time to go to

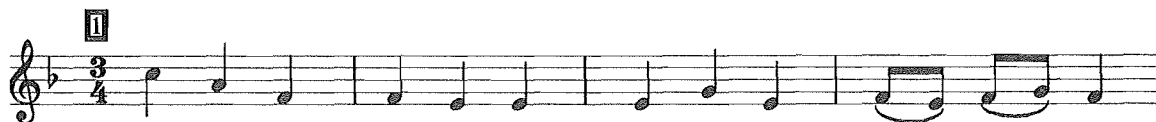


work. Wake up, wake up, It's time to go to work.



Ku-ku-ri-ku Ku-ku-ri-ku Hear the roost-er crow!

Caffee
K. G. Herring (18th. C.)



C- A- F- F- E- E, Trink nicht so viel Caf- fee



Nicht für Kin- der ist der Tur- ken Trank, Schwecht die Ner- ven, macht dich



blass und krank, Sei doch kein Mus- sel- Mann, der ihn nicht las- sen kann.

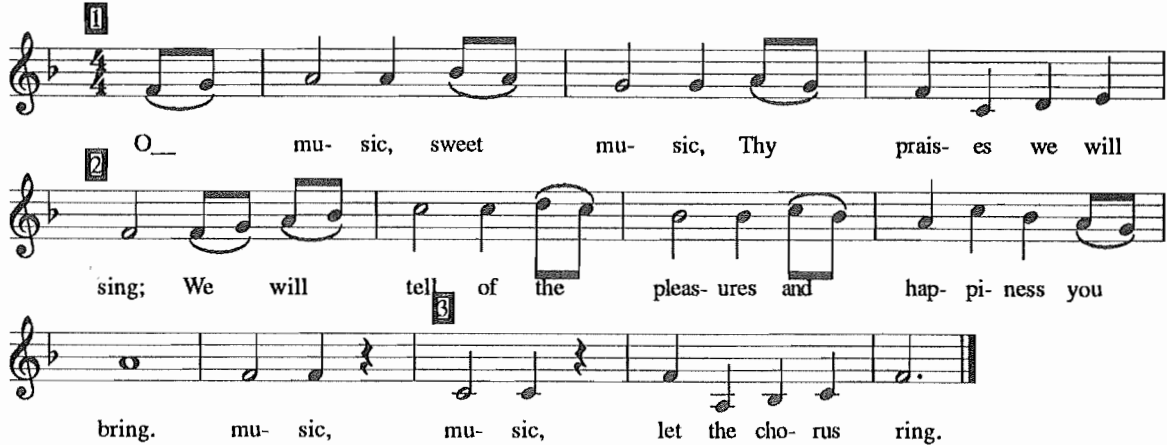
Early as I Me Walking
William Byrd



Ear- ly as I me walk- ing Up- on a May mor- ning, I heard a bird sing!

O Music

Lowell Mason



O_ mu- sic, sweet mu- sic, Thy prais- es we will
sing; We will tell of the pleas- ures and hap- pi- ness you
bring. mu- sic, mu- sic, let the cho- rus ring.

About the Co-Chairpersons

Nancy Boone

Nancy Boone, a native of Virginia, received degrees in music education from Tennessee Wesleyan, the University of Tennessee and the University of Illinois. She is an associate professor of music at Middle Tennessee State University in Murfreesboro where for the past 12 years she has taught music education methods and Kindergarten through Grade 6 at the University Laboratory School. Active in MENC and ACDA, she is Southern Division Chair for the Society for Music Teacher Education and state chair for Children's Choirs for ACDA. She is respected for her outstanding work with children's choirs; members of her choir appear on the recordings that accompany Silver Burdett MUSIC. She was one of four contributors to the recent MENC publication, Choral Music for Children: An Annotated List.

Mary Goetze

Mary Goetze's professional activities focus on methods and literature for children's choirs and the development of children's singing ability. Currently, as Associate Professor of Music at the Indiana University School of Music, she directs a children's choir program as well as teaches courses in the music education department. She is active as a clinician, composer and guest conductor, and has published numerous arrangements and compositions for treble voices. In addition to degrees from Oberlin Conservatory of Music, Indiana University and the University of Colorado, she holds certification in Kodály and Orff-Schulwerk. Her PhD dissertation entitled "Factors Affecting Accuracy in Children's Singing" was named Outstanding Dissertation of 1985 by MENC and CRME. In April, 1991, Indiana University honored her with the President's Award for Distinguished Teaching.